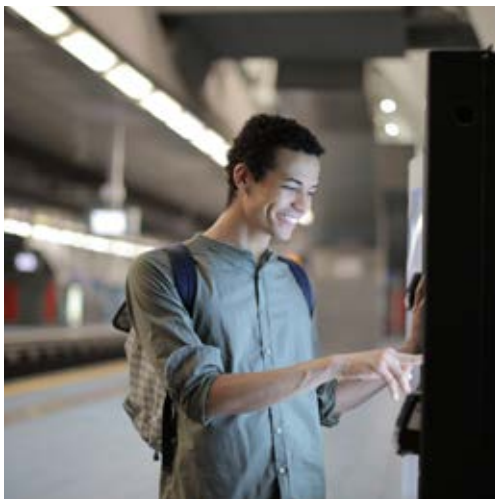




**BANK OF  
AMERICA  
SAN DIMAS, CA**

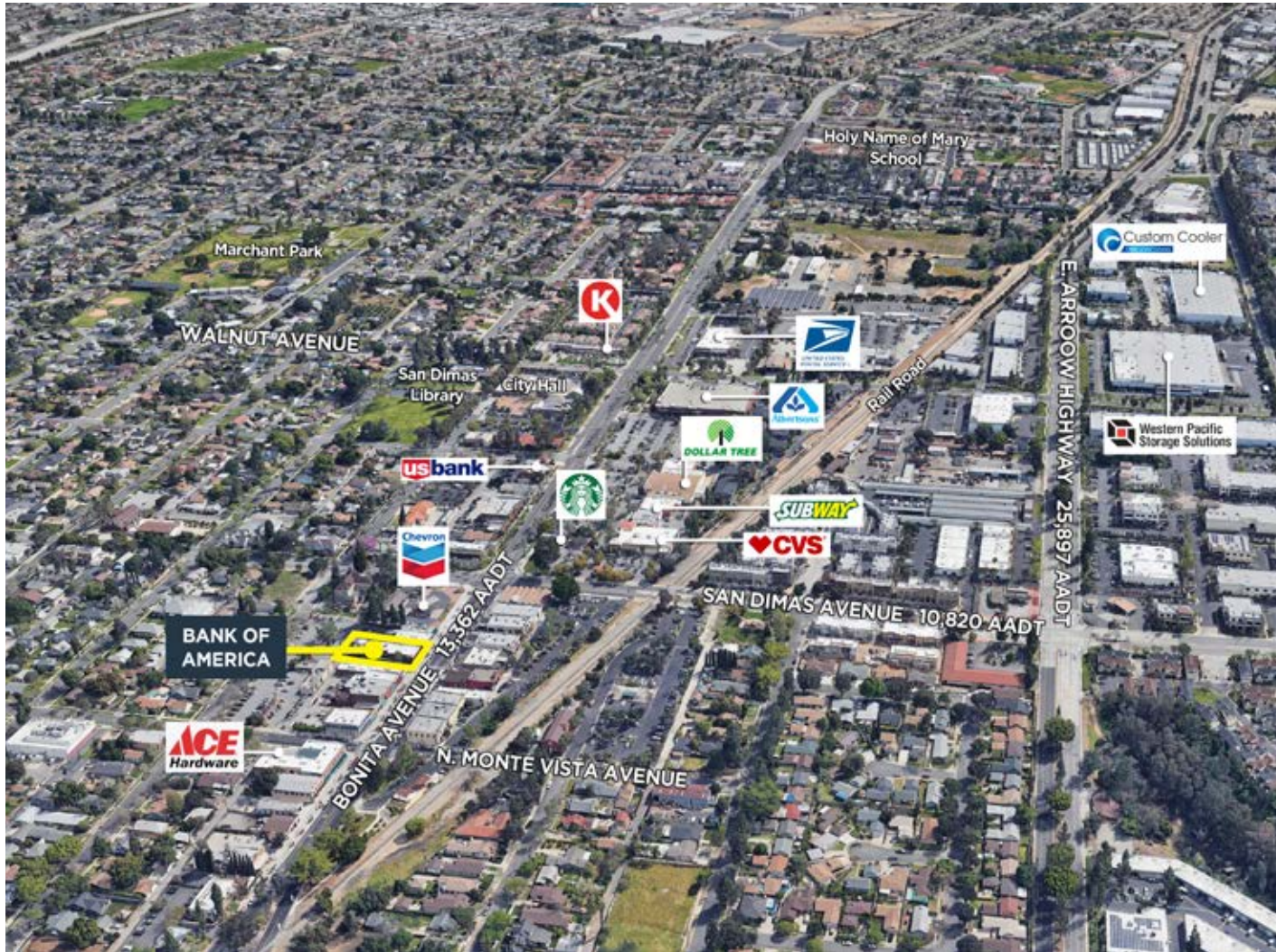


  
**VALUEROCK**



# BANK OF AMERICA

135 W. Bonita Avenue, San Dimas, CA



## PROPERTY DETAILS

|                       |        |
|-----------------------|--------|
| Building Square Feet: | 7,832  |
| Acres:                | 0.37   |
| Year Built:           | 1955   |
| Lease Term:           | 15 yrs |



## KEY HIGHLIGHTS

- Irreplaceable single-tenant building with private parking field
- Close proximity to several major daily crowd generators such as ACE Hardware, Dollar Tree and Albertsons
- Frontage on one of the main thoroughfares in the area
- Located in the heart of a high-traffic area

Contact: **Ralph Ongkeko** | (855) 367-8877 | [rongkeko@valuerockrealty.com](mailto:rongkeko@valuerockrealty.com) | [valuerockrealty.com](http://valuerockrealty.com)

18301 Von Karman Avenue, Suite 850, Irvine, CA 92612

The information contained has been secured from sources we believe to be reliable, but we make no representations or warranties, expressed or implied, as to the accuracy of the information. The receiving party must verify the information and bears all risk for any inaccuracies.

