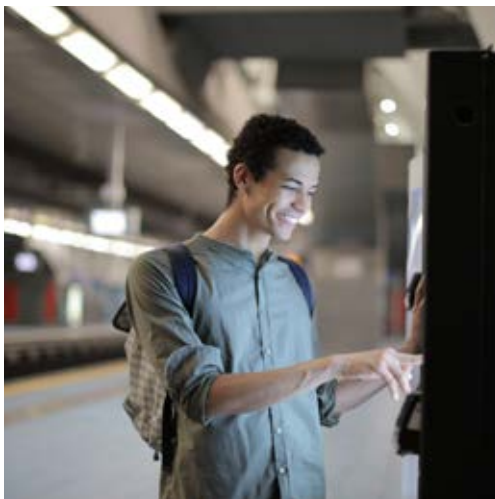




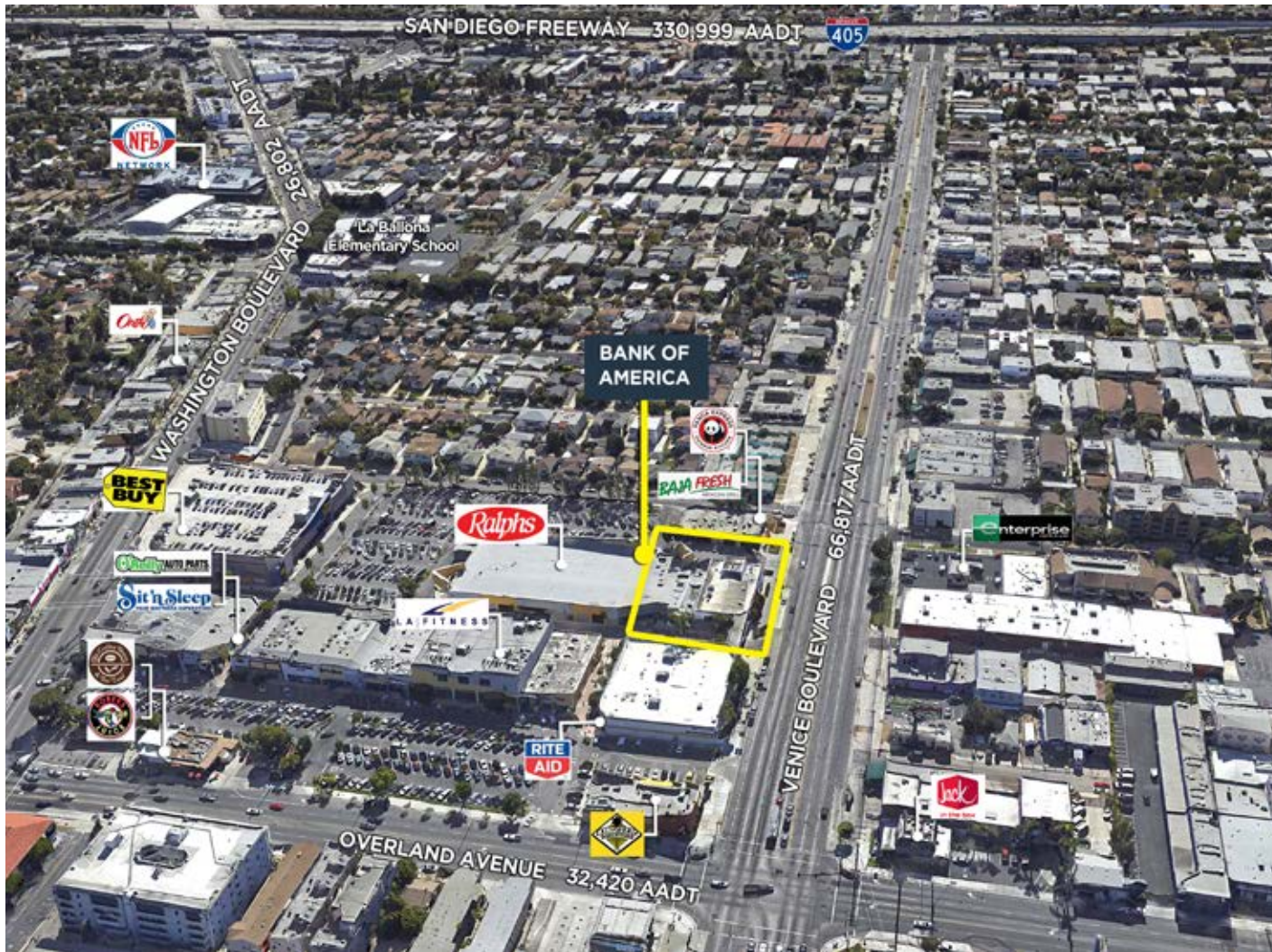
**BANK OF
AMERICA
CULVER CITY, CA**




VALUEROCK

BANK OF AMERICA

3809 Culver Center Street, Culver City, CA



PROPERTY DETAILS

Building Square Feet:	9,940
Acres:	0.80
Year Built:	1953
Lease Term:	15 yrs



KEY HIGHLIGHTS

- Irreplaceable real estate in the heart of Culver City
- Part of Ralphs grocery-anchored center
- Adjacent to several major daily crowd generators such as Rite Aid and LA Fitness
- Street frontage on a major thoroughfare that sees over 60,000 vehicles per day

Contact: **Ralph Ongkeko** | (855) 367-8877 | rongkeko@valuerockrealty.com | valuerockrealty.com

18301 Von Karman Avenue, Suite 850, Irvine, CA 92612

The information contained has been secured from sources we believe to be reliable, but we make no representations or warranties, expressed or implied, as to the accuracy of the information. The receiving party must verify the information and bears all risk for any inaccuracies.

