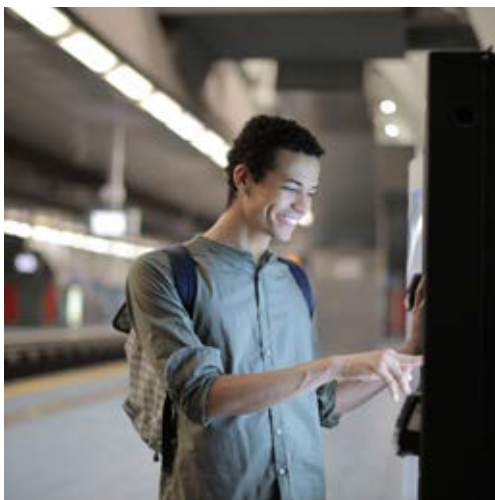




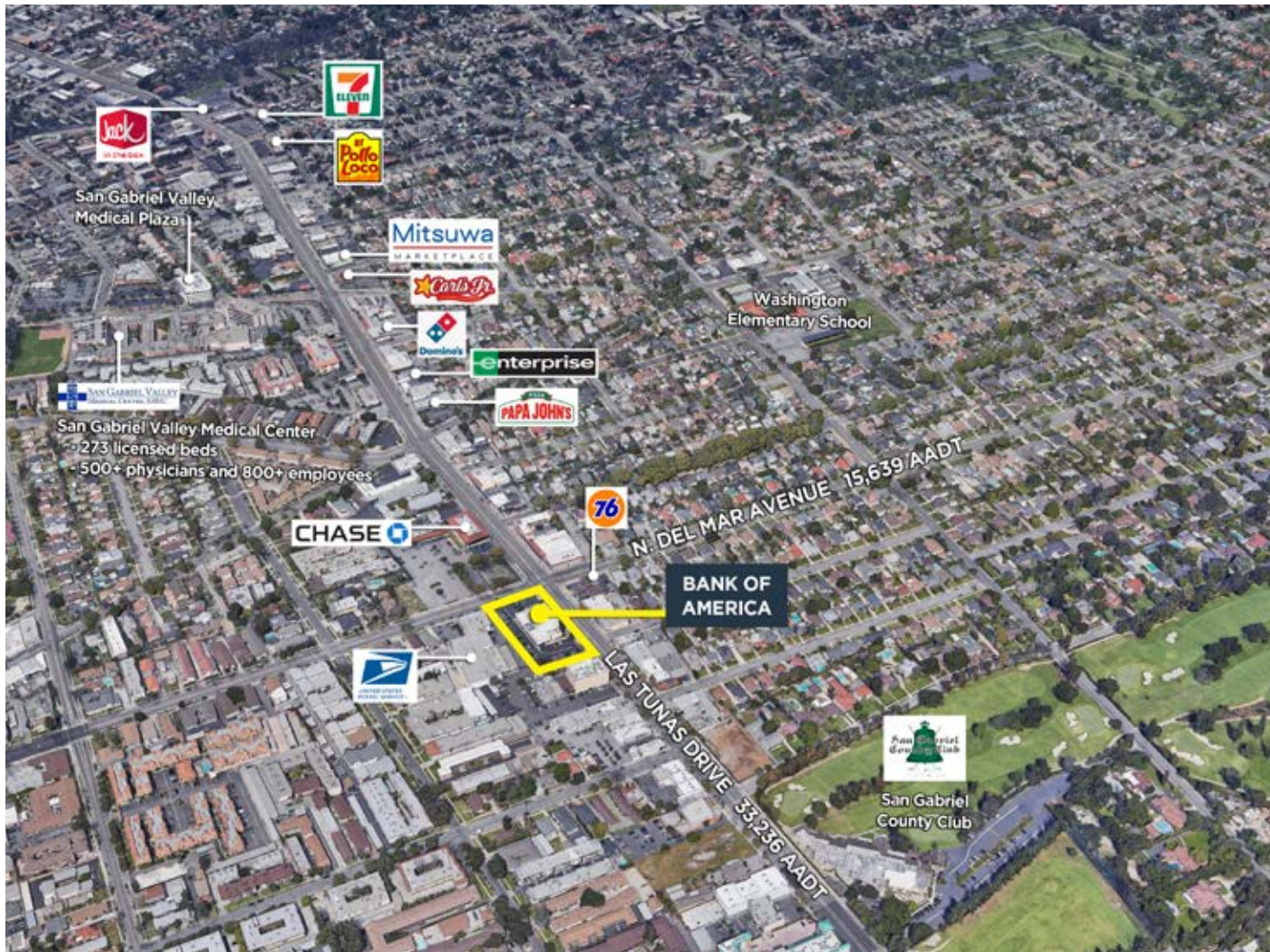
**BANK OF
AMERICA
SAN GABRIEL, CA**




VALUEROCK

BANK OF AMERICA

102 E. Las Tunas Drive, San Gabriel, CA



PROPERTY DETAILS

Building Square Feet:	13,284
Acres:	0.93
Year Built:	1972
Lease Term:	15 yrs



KEY HIGHLIGHTS

- Single-tenant building with oversized private parking field
- Close proximity to several major daily crowd generators, including San Gabriel Valley Medical Center (800+ employees)
- Frontage on two major thoroughfares
- Irreplaceable real estate located in the heart of a high-traffic area

Contact: **Ralph Ongkeko** | (855) 367-8877 | rongkeko@valuerockrealty.com | valuerockrealty.com

18301 Von Karman Avenue, Suite 850, Irvine, CA 92612

The information contained has been secured from sources we believe to be reliable, but we make no representations or warranties, expressed or implied, as to the accuracy of the information. The receiving party must verify the information and bears all risk for any inaccuracies.

