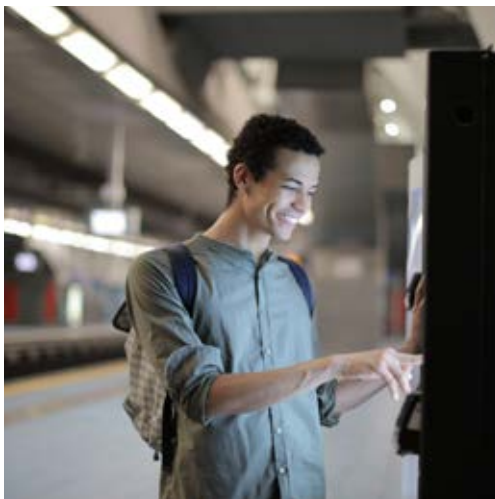




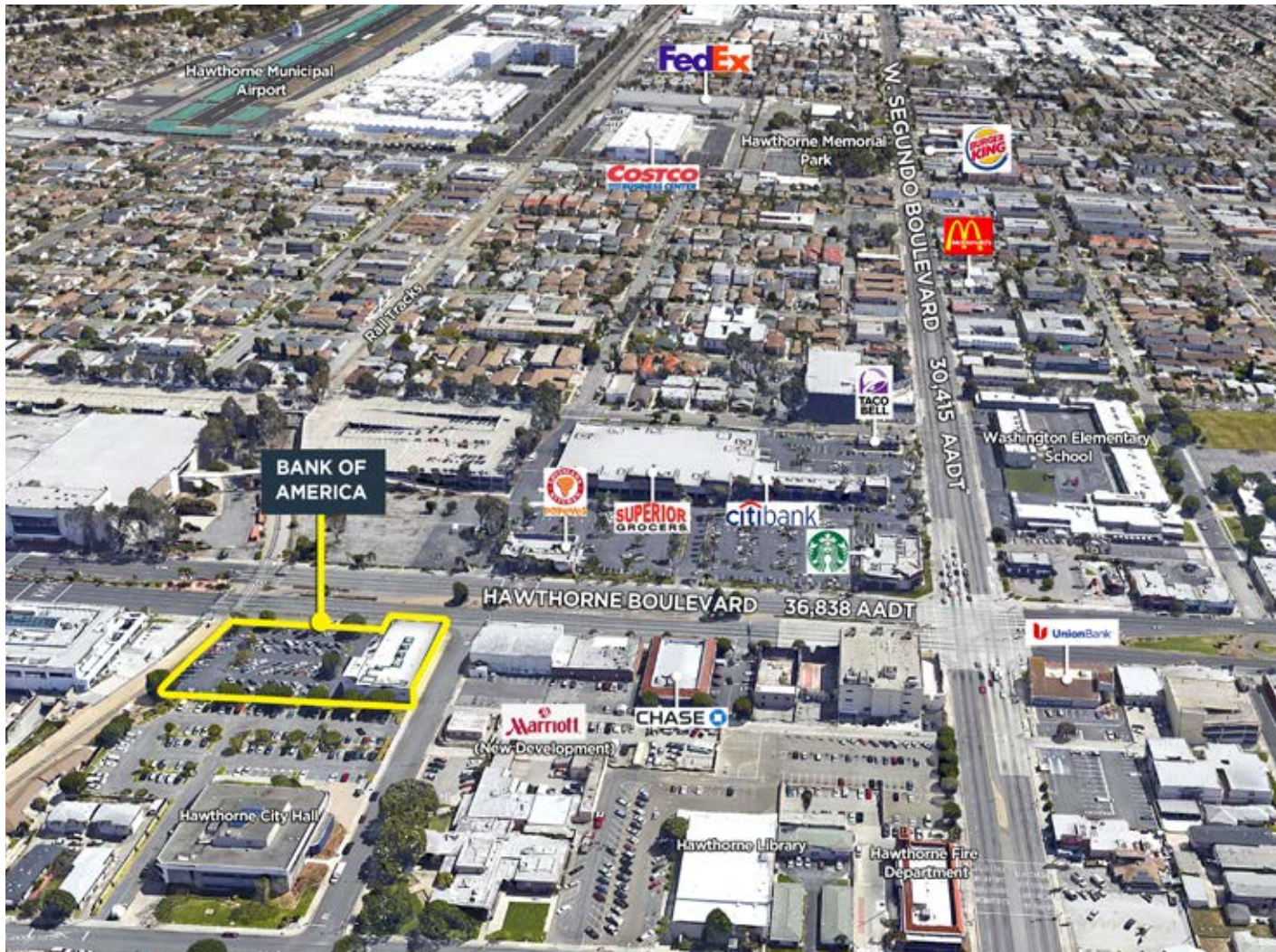
**BANK OF
AMERICA
HAWTHORNE, CA**




VALUEROCK

BANK OF AMERICA

12547 Hawthorne Boulevard, Hawthorne, CA



PROPERTY DETAILS

Building Square Feet:	13,239
Acres:	1.29
Year Built:	1954
Lease Term:	15 yrs



KEY HIGHLIGHTS

- Single-tenant building with oversized private parking field
- Adjacent to several major daily crowd generators including Superior Grocers and a new Marriott hotel
- Frontage on a major thoroughfare that sees nearly 37,000 vehicles per day
- Irreplaceable real estate located in the heart of a high-traffic area

Contact: **Ralph Ongkeko** | (855) 367-8877 | rongkeko@valuerockrealty.com | valuerockrealty.com

18301 Von Karman Avenue, Suite 850, Irvine, CA 92612

The information contained has been secured from sources we believe to be reliable, but we make no representations or warranties, expressed or implied, as to the accuracy of the information. The receiving party must verify the information and bears all risk for any inaccuracies.

