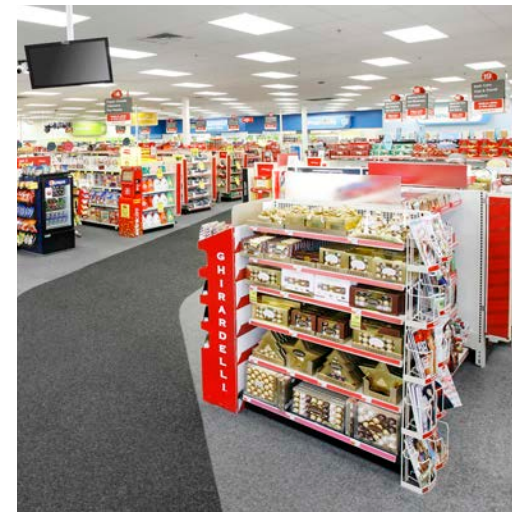




CVS



**CVS
LYNCHBURG
VIRGINIA**



VALUEROCK

CVS

21550 Timberlake Road, Lynchburg, VA 24502



KEY HIGHLIGHTS

- Established publicly traded (NYSE: CVS) national tenant with approximately 10,000 locations and counting
- Internet- and pandemic-proof business model
- Close proximity to University of Lynchburg, Liberty University, and Lynchburg Regional Airport
- Great frontage to and visibility from Timberlake Road

PROPERTY DETAILS

GLA 10,888 SF
 Land Size 1.13 Acres

SURROUNDING DEMOGRAPHICS

	1 mile	3 mile	5 mile
Population	5,269	34,575	64,910
Average Income	\$59,852	\$69,013	\$71,382

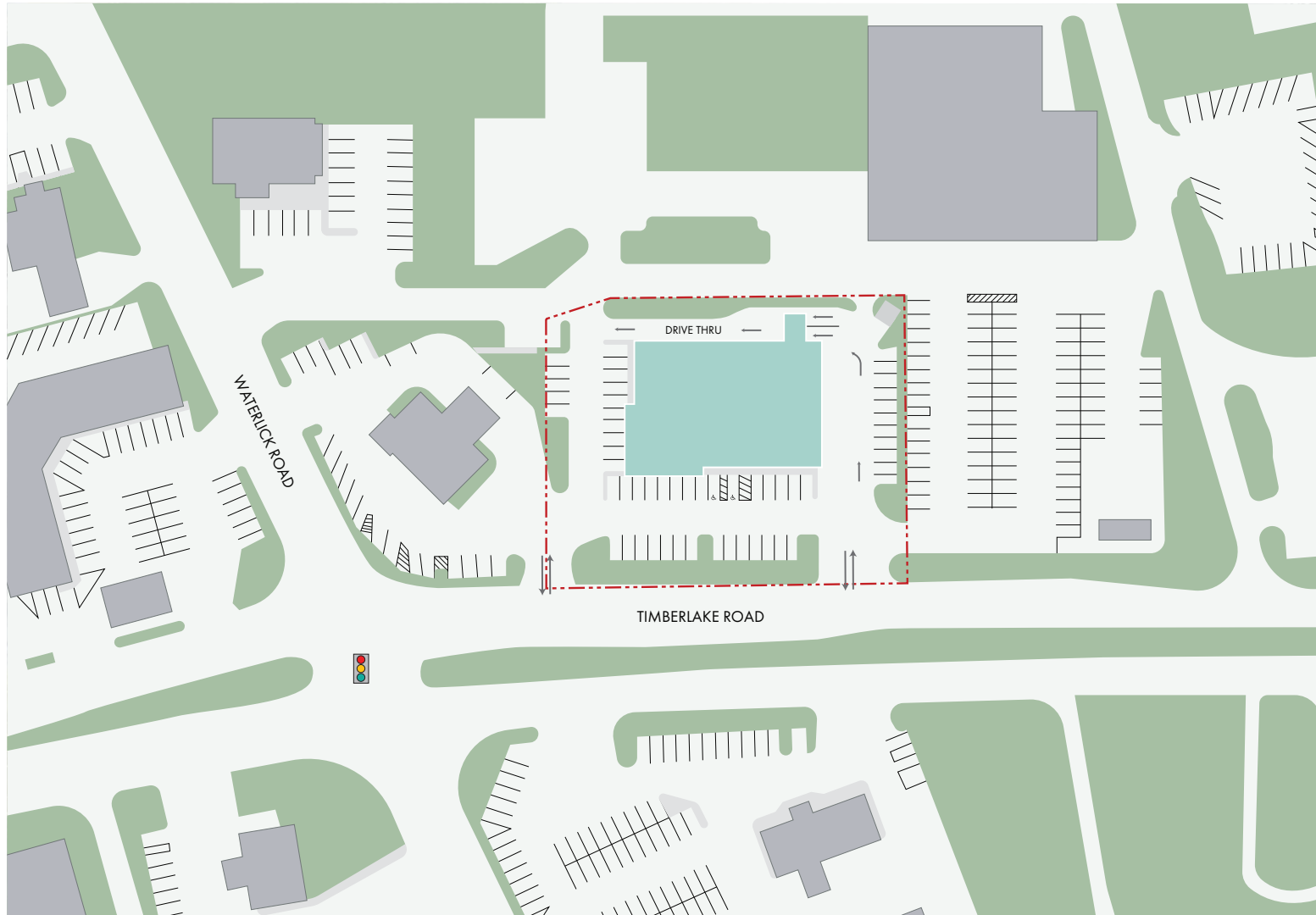
Contact: **Ralph Ongkeko** | (855) 367-8877 | rongkeko@valuerockrealty.com | valuerockrealty.com
 18301 Von Karman Avenue, Suite 850, Irvine, CA 92612

The information contained has been secured from sources we believe to be reliable, but we make no representations or warranties, expressed or implied, as to the accuracy of the information. The receiving party must verify the information and bears all risk for any inaccuracies.



CVS

21550 Timberlake Road, Lynchburg, VA 24502



Contact: **Ralph Ongkeko** | (855) 367-8877 | rongkeko@valuerockrealty.com | valuerockrealty.com
18301 Von Karman Avenue, Suite 850, Irvine, CA 92612

The information contained has been secured from sources we believe to be reliable, but we make no representations or warranties, expressed or implied, as to the accuracy of the information. The receiving party must verify the information and bears all risk for any inaccuracies.

